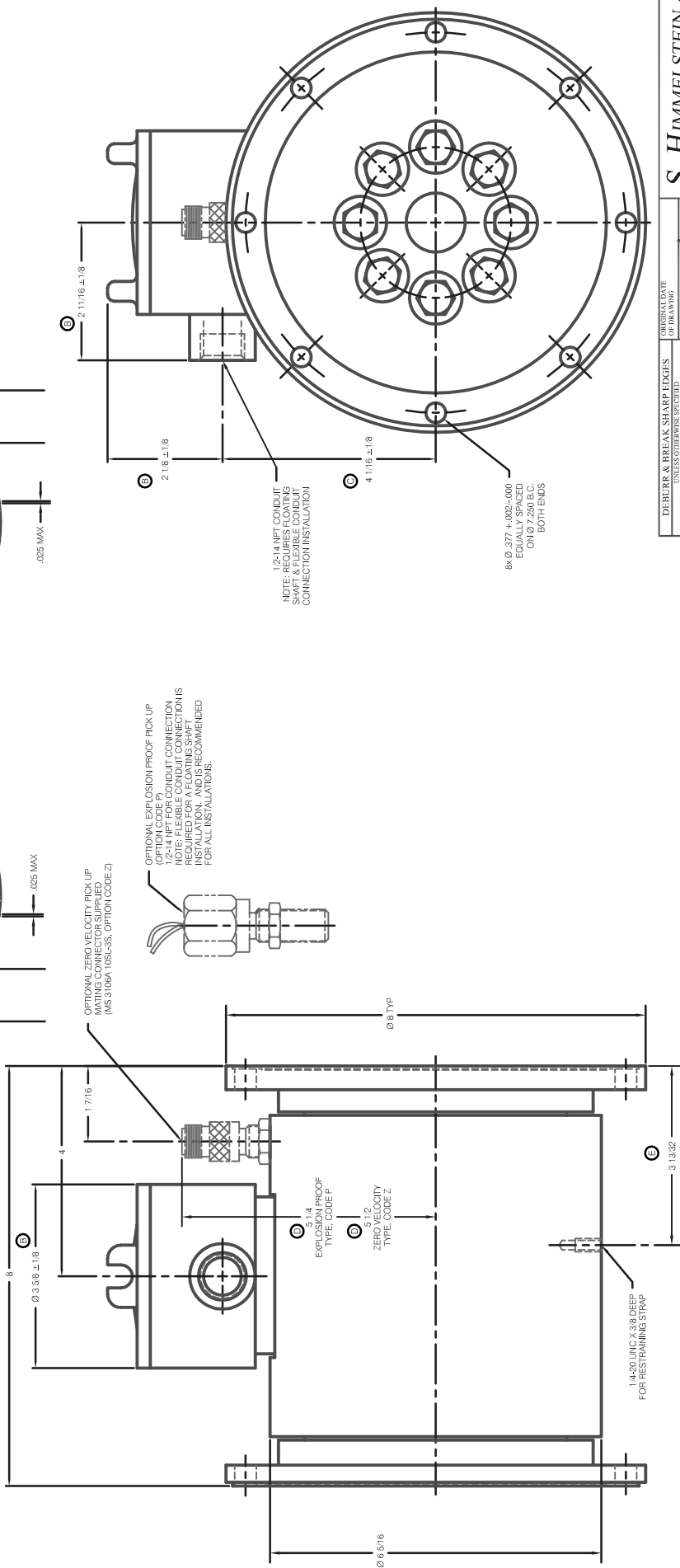
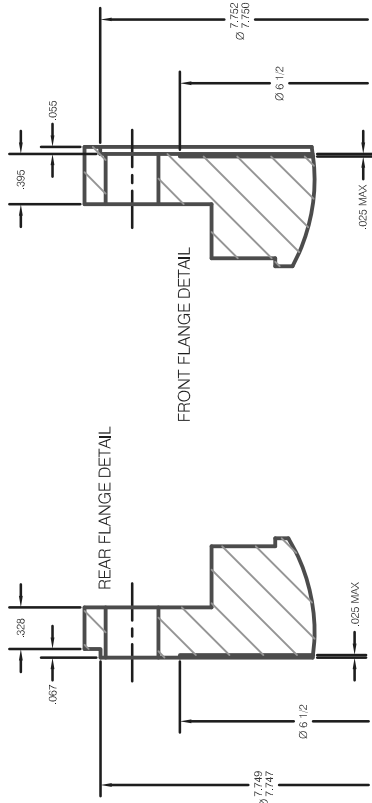


REVISION CONTAINED HEREIN IS CONSIDERED PROHIBITIVE FOR S. HIMMELSTEIN AND COMPANY. IT IS RELEASED ONLY FOR THE LIMITED USE OF THE EQUIPMENT OR COMPONENTS THEREOF BY THE ORIGINAL USER. ANY REPRODUCTION, DISTRIBUTION, OR USE IN ANY MANNER WITHOUT THE WRITTEN CONSENT OF S. HIMMELSTEIN AND COMPANY IS PROHIBITED.

SYM	DESCRIPTION	DATE	APPR
A	POCA (NS448332) REVISIONS PER IEC 60079-0	10/03/1993	ST/ES
B	3.1/2, 2.5/8 & 2.3/16 WERE 1/8 & 3/8 IN. WERE 1/8 IN. WERE 1/8 IN.	01/11/1994	CEB
C	4.1/16 WAS 3.15/16. DESIGN CHANGE. NO ECN 04/25/1997 AJ/GB		
D	ADDED SPEED PICKUP HEIGHTS. NO ECN 06/13/2005 AJ/GB		
E	ADDED RESTRAINING STRAP LOCATING DIM. NO ECN 05/02/2011 SJ/AL/GB		



DEBURR & BREAK SHARP EDGES		ORIGINAL DATE OF DRAWING	
DRAGS	INSURANCE DIMENSIONS ARE IN INCHES	DATE	1993
DECIMALS	ANGLES	DRAWN	David Bentley
..	±.07	CHECKED	Allen E. Smith
..	..	DATE	03/12/1993
SURFACE FINISH	..	ENGINEER	
MATERIAL	..		
HEAT TREAT	..		
FINISH	..		

**S. HIMMELSTEIN & Co.**  
**OUTLINE**  
**39070X, 39070X**  
**TORQUE TRANSMITTER**

SIZE: **D 224-6738 E**  
 SCALE: NONE SHEET 1 OF 1 REV