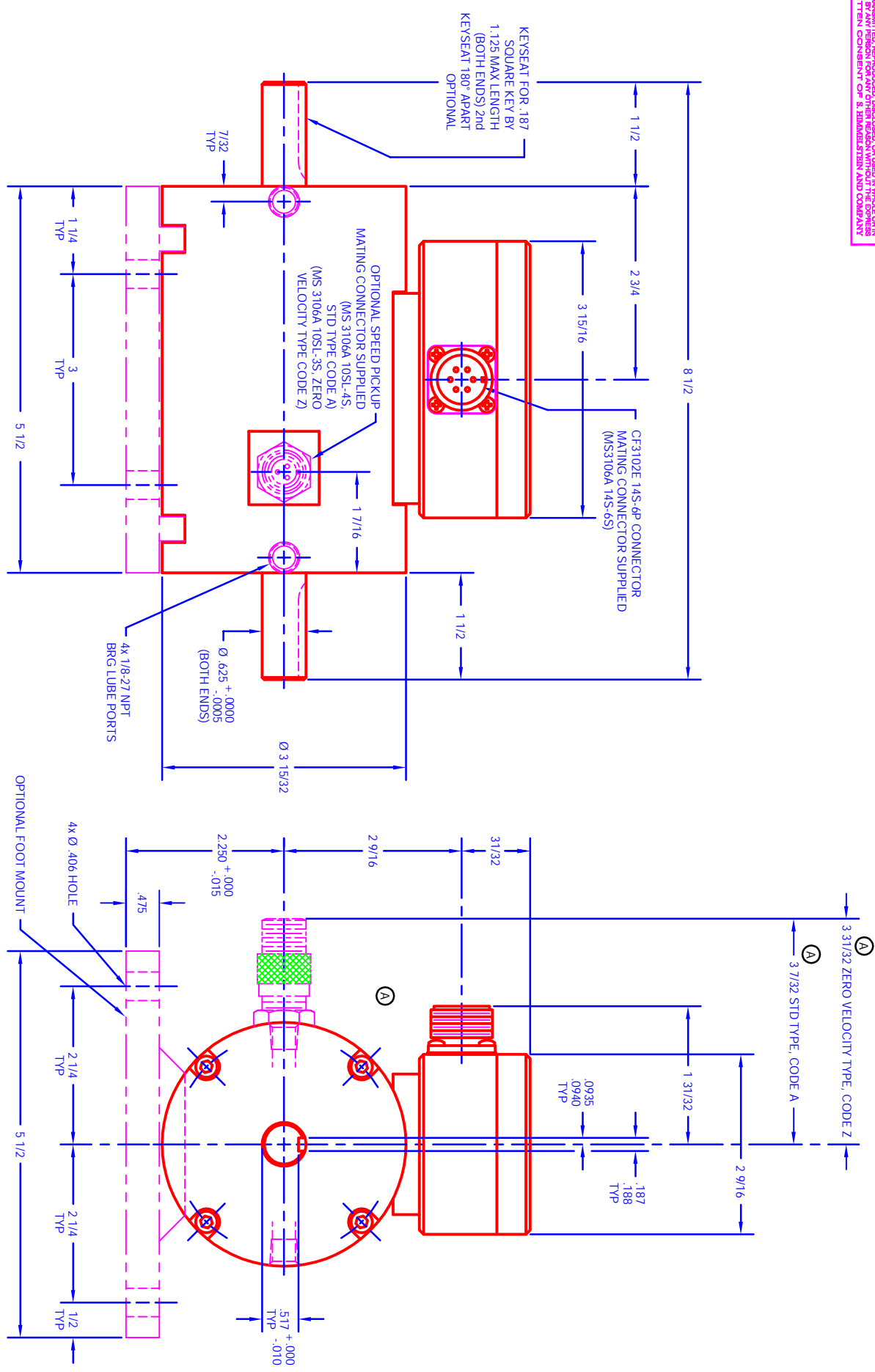


REGISTRATION COORDINATE SYSTEM IS CONSIDERED INDICATIVE FOR USE IN CONNECTION WITH THE FABRICATION, ASSEMBLY, OPERATION, MAINTENANCE, REPAIR AND/OR REWORK OF THIS PART. THE INFORMATION PROVIDED HEREIN IS FOR INFORMATION ONLY. THE INFORMATION IS NOT TO BE USED FOR ANY OTHER PURPOSES WITHOUT THE EXPRESS WRITTEN CONSENT OF S. HIMMELSTEIN AND COMPANY.



PLOTTED: 06/19/2006 @11:07, ENG REF ONLY: 47440.DWG.GBD87

<b>DEBURR &amp; BREAK SHARP EDGES</b> UNLESS OTHERWISE SPECIFIED DIMENSIONS ARE IN INCHES		MATERIAL: NONE FINISH: NONE		<b>S. HIMMELSTEIN &amp; Co.</b> OUTLINE 2900-1T	
TOLERANCES ON FINISHES: ... DECIMALS: ... ANGLES: ... SURFACE FINISH: ...	DRAWN: <i>Shawna Beckley</i> CHECKED: <i>William B. Braker</i> ENGINEER:	DATE: 12/16/1989 DATE: 12/16/1989	DATE: 12/16/1989 DATE: 12/16/1989	SCALE: 1:1 SHEET: 1 OF 1	REV: A
<b>REVISIONS</b> DESCRIPTION DATE APP	A SPEED PICKUP HEIGHT WAS 3/4 FOR BOTH, NO ECH	06/19/2006 DATE	06/19/2006 DATE	<b>REVISIONS</b> DESCRIPTION DATE APP	