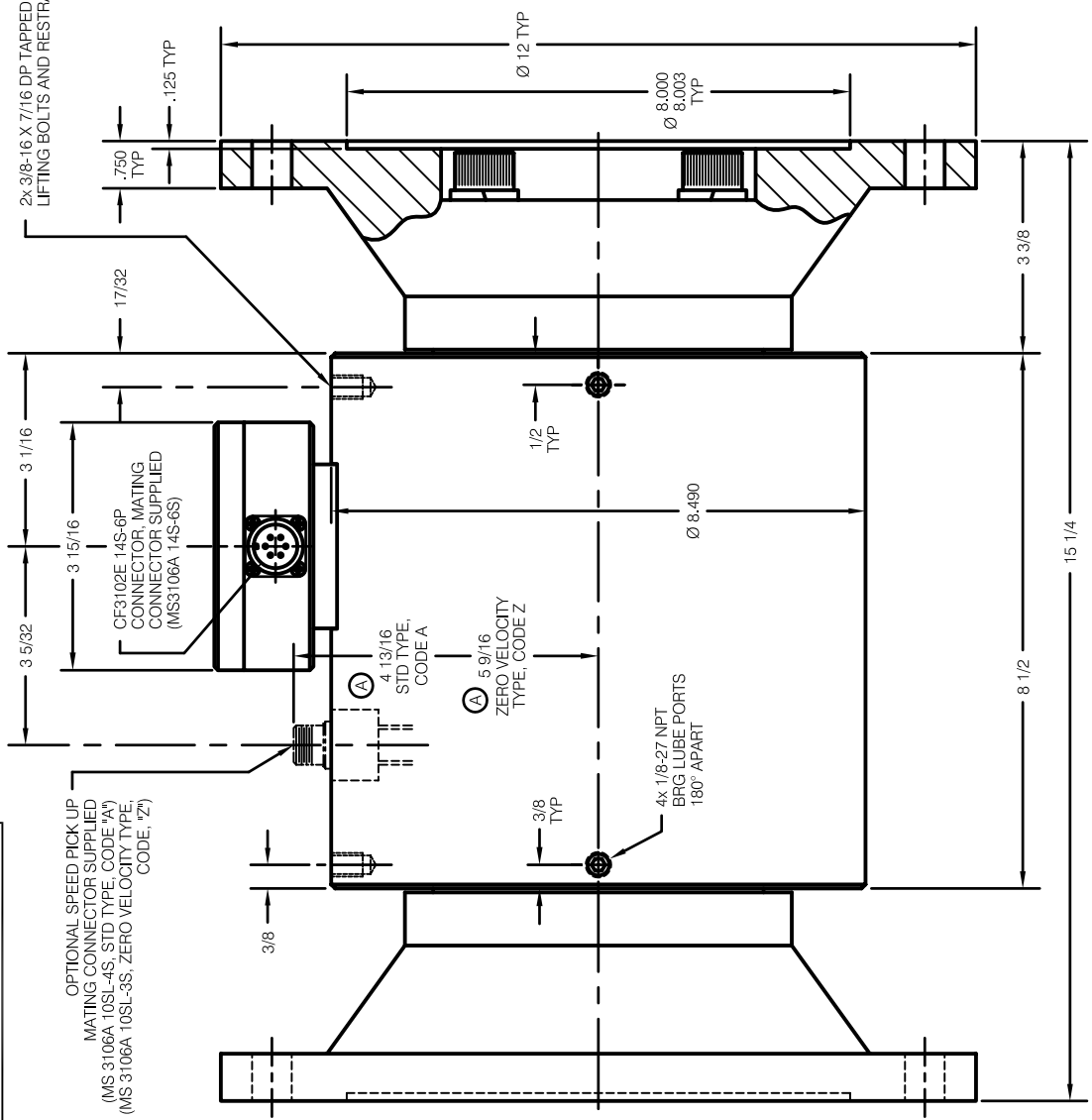
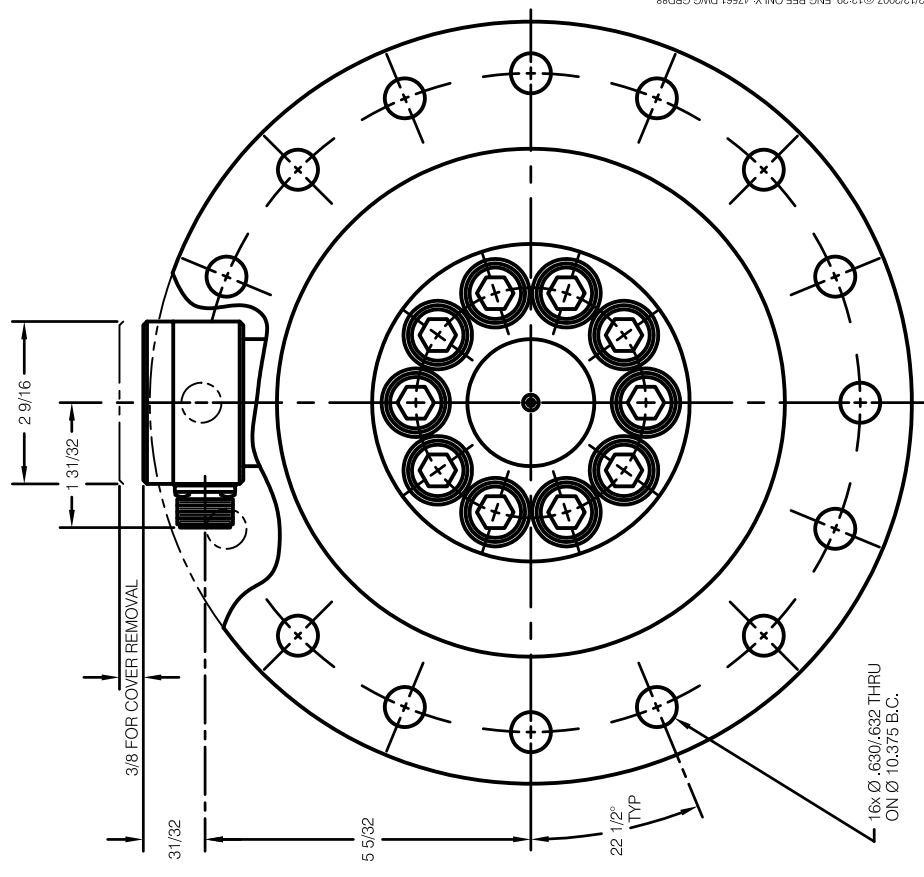


THIS DRAWING IS THE PROPERTY OF S. HIMMELSTEIN AND COMPANY. IT IS TO BE USED ONLY FOR THE PROJECT AND WITH THE FABRICATOR. ASSURE PROPER OPERATION. BEHOLDERS OF THIS DRAWING ARE TO BE KEPT UNDER LOCK AND KEY. NO REPRODUCTION OR TRANSMISSION OF THIS DRAWING IS TO BE MADE WITHOUT THE WRITTEN CONSENT OF S. HIMMELSTEIN AND COMPANY.

OPTIONAL SPEED PICK UP
MATING CONNECTOR SUPPLIED
(MS 3106A 10SL-4S, STD TYPE, CODE 'A')
(MS 3106A 10SL-3S, ZERO VELOCITY TYPE, CODE, 'Z')



2x 3/8-16 X 7/16 DP TAPPED HOLES FOR LIFTING BOLTS AND RESTRAINING STRAP BOLTS



REVISIONS			
SYM	DESCRIPTION	DATE	APPR
A	STD HEIGHT WAS 4.2732. ADDED ZERO VELOCITY HEIGHT	06/23/2006	AJ/CB
B	ADDED 28080T IN TITLE BLOCK. REF ECN 388	10/12/2007	AJ/CB

DEBURE & BREAK SHARP EDGES		ORGANIZATION OF DRAWING	
TOLERANCES UNLESS OTHERWISE SPECIFIED	DIMENSIONS ARE IN INCHES	PROVAN	DATE
FRACTIONS	DECIMALS	<i>Ronald Buehler</i>	12/28/09
ANGLES		<i>William G. Brack</i>	12/28/09
SURFACE FINISH	T	ENGINEER	DATE
MATERIAL			
HEAT TREAT			
FINISH			

S. HIMMELSTEIN & Co.	
OUTLINE	
29080T	
28080T (E)	
SIZE	D
SCALE	1:1
SHEET	1 OF 1
REV	B

PLOTTED: 02/12/2007 @ 12:29 ENG REF ONLY: 47561.DWG.GB88