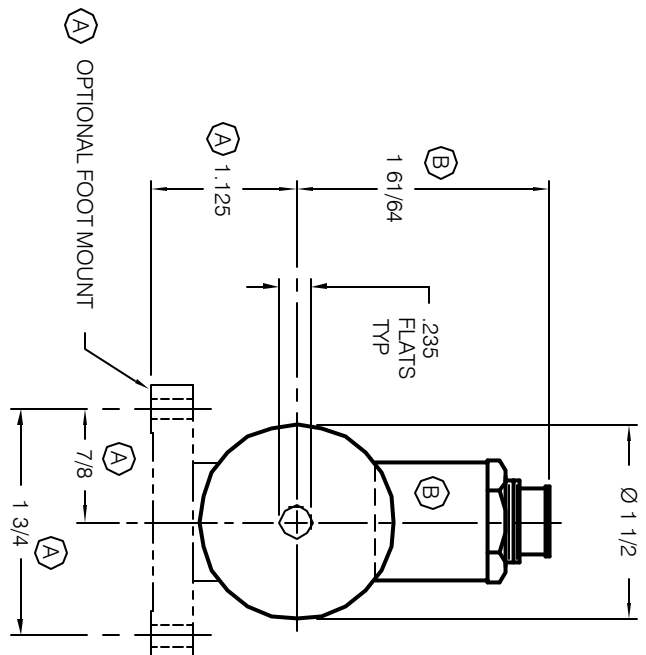
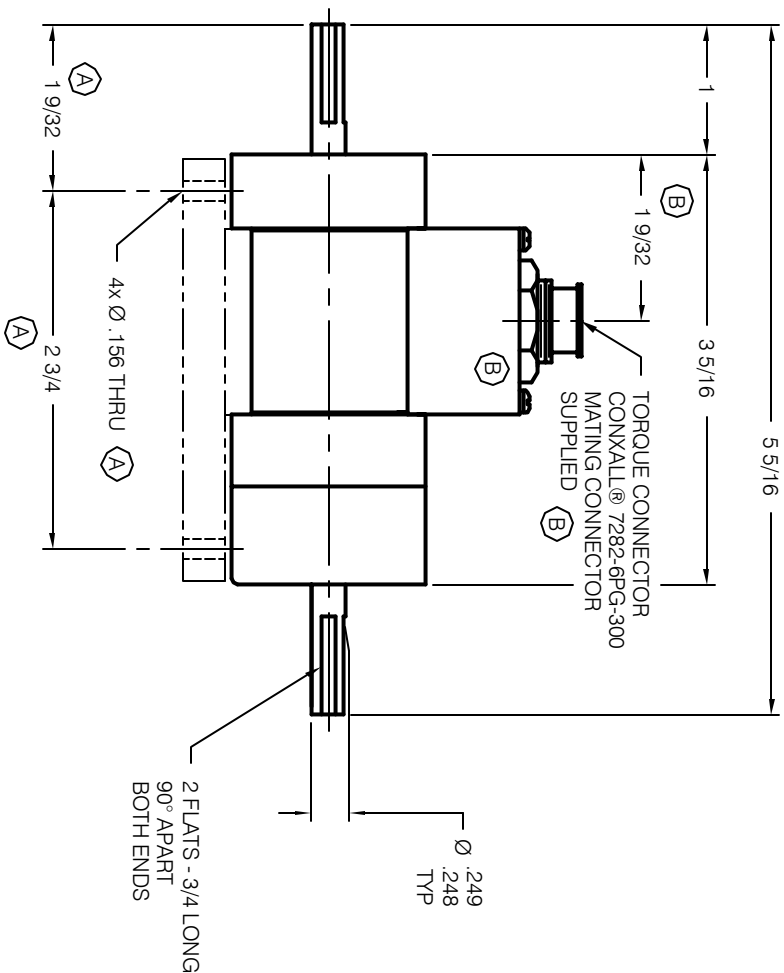


THIS DRAWING IS THE PROPERTY OF S. HIMMELSTEIN & CO. ANY REPRODUCTION OR USE OF THIS DRAWING WITHOUT THE WRITTEN CONSENT OF S. HIMMELSTEIN & CO. IS PROHIBITED.



B	1. USE TO CONNECT OR DISCONNECT CONNALL TORQUE CONNECTOR 1.8144 WHERE NO CONNECTION IS MADE. WHEN CONNECTED, THE TORQUE CONNECTOR MUST BE REMOVED FROM THE CONNECTION. THE TORQUE CONNECTOR MUST BE REMOVED FROM THE CONNECTION. THE TORQUE CONNECTOR MUST BE REMOVED FROM THE CONNECTION.	QUANTITY	REVISION
A	ADDED: FOOT MOUNT & DIMS. NO EON	QUANTITY	DATE APP
STM	DESCRIPTION	DATE	APP

DEBURR & BREAK SHARP EDGES - UNLESS OTHERWISE SPECIFIED DIMENSIONS ARE IN INCHES

OUTLINE

28000T/29000T

DRAWN <i>Spencer Shockey</i>	DATE 08/07/99	TOLERANCES ON FRACTIONS ±1/32	DECIMALS ±.010	ANGLES ±12°	SURFACE FINISH 63.2
CHECKED <i>William J. Jacobs</i>	DATE 08/19/99	S. HIMMELSTEIN & CO.			
TORQUE RANGES: 10, 20, 50, 100 & 200 OZ-IN		SCALE	SIZE	REV	
SPEED RATED: 25,000 RPM		1:1	B	224-7357	B